

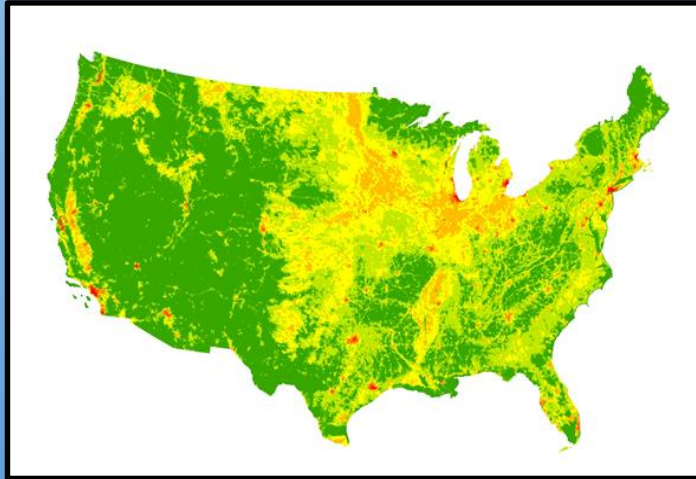


What is the Goal of the Watershed Index Online?

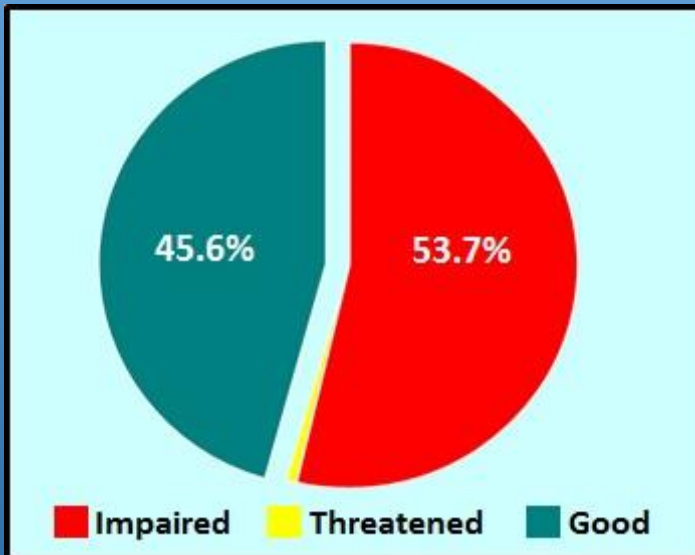


Clean and Safe Water for the Nation

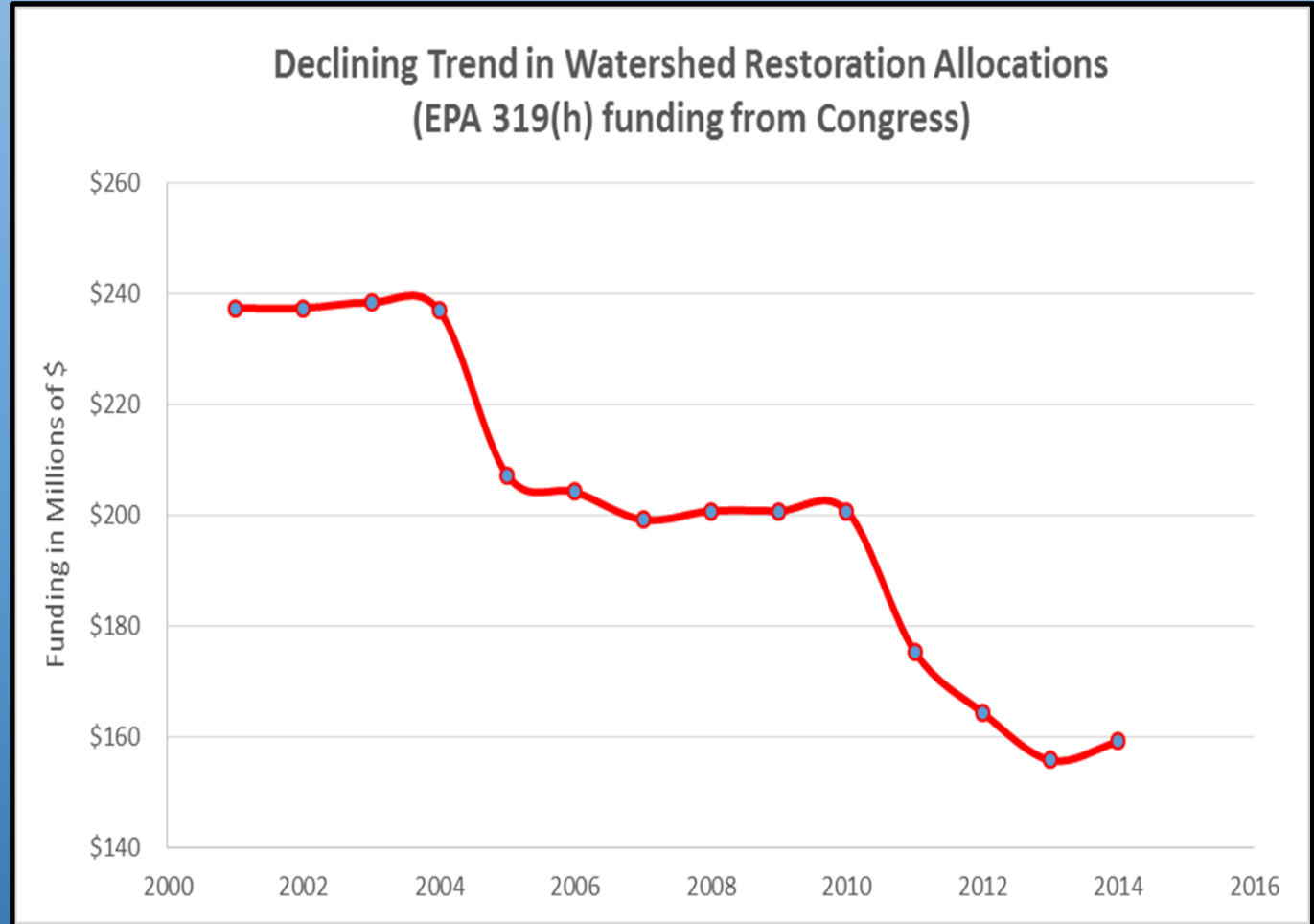
What is the Problem?



Human Impact



Impaired Rivers & Streams



Limited Resources Mean You Must Prioritize!

Why Did We Build the Watershed Index Online?



**Increased
Accessibility to
Hundreds of
Datasets**

**Tool that Helps
Federal, State
and Local
Partners**



**Science-based
Prioritization of
Limited
Resources**

**Enhance
Communication
with
Stakeholders**



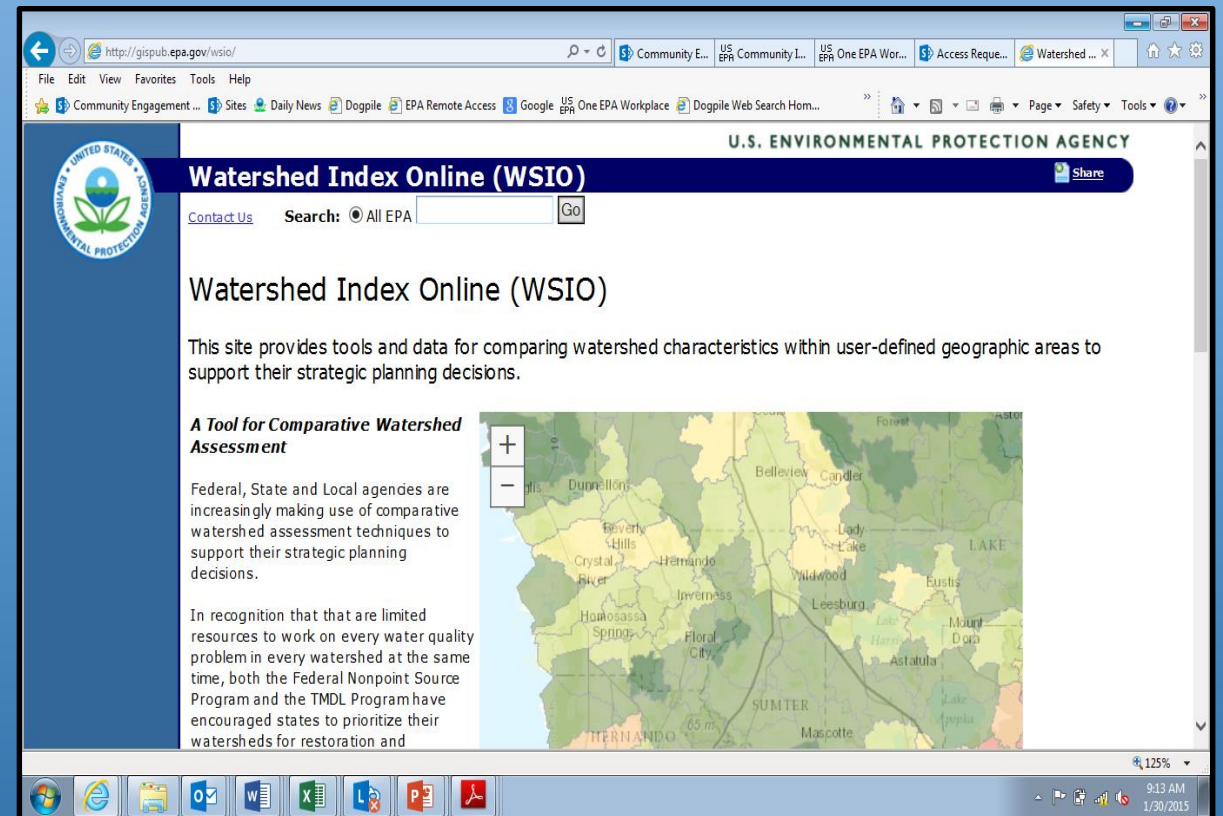
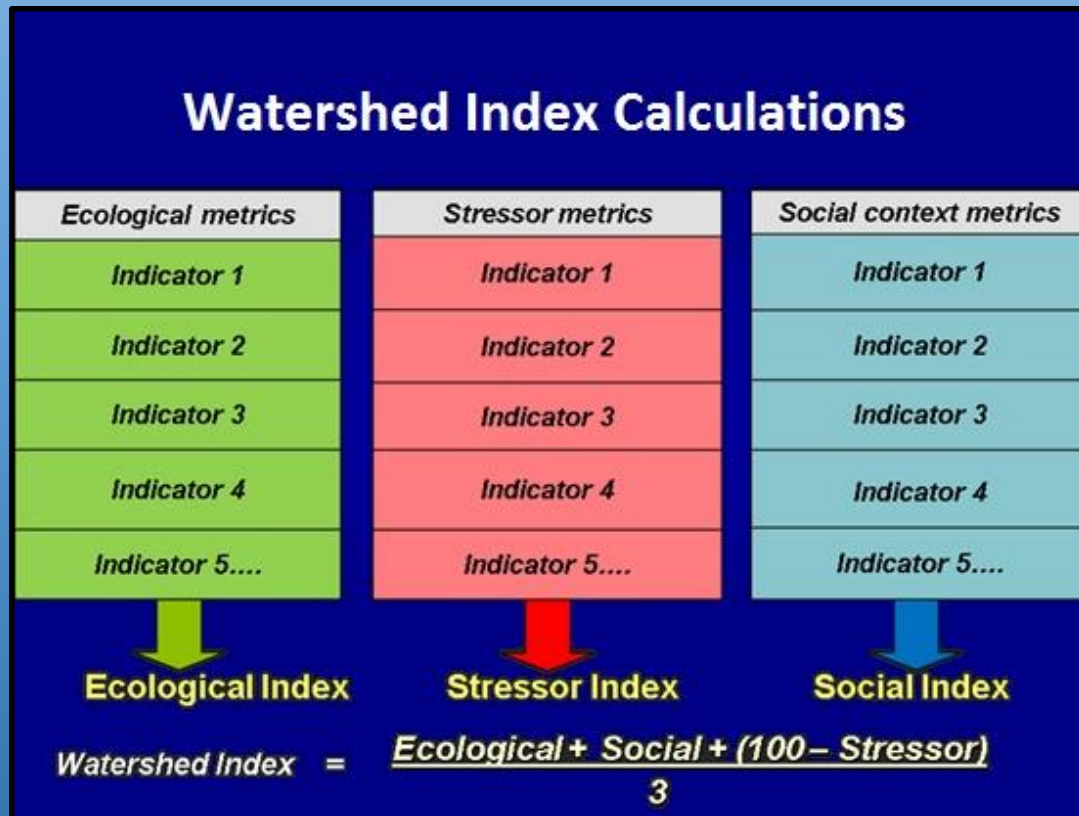
Watershed Index Online (WSIO)

Scientific Basis of Approach



What is the Watershed Index Online?

<http://gispub.epa.gov/wsio/>

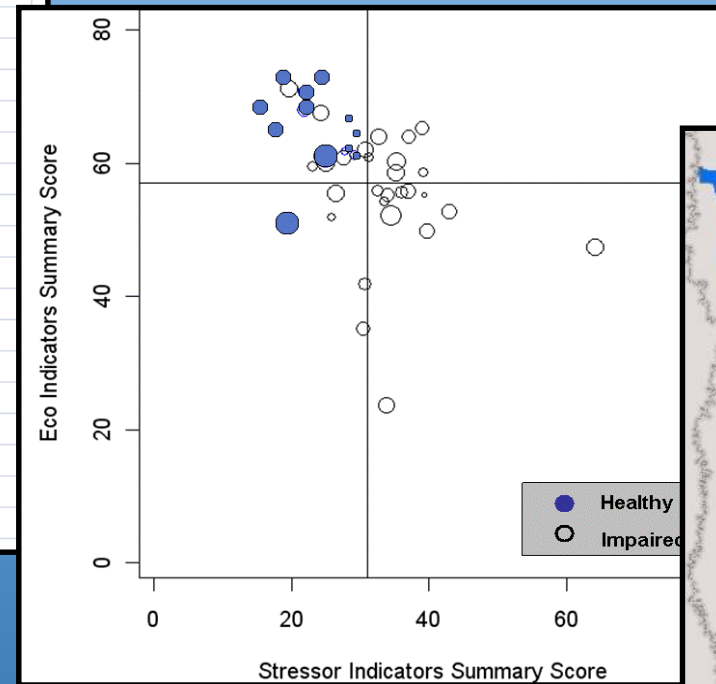


Hundreds of national datasets make up the WSIO!

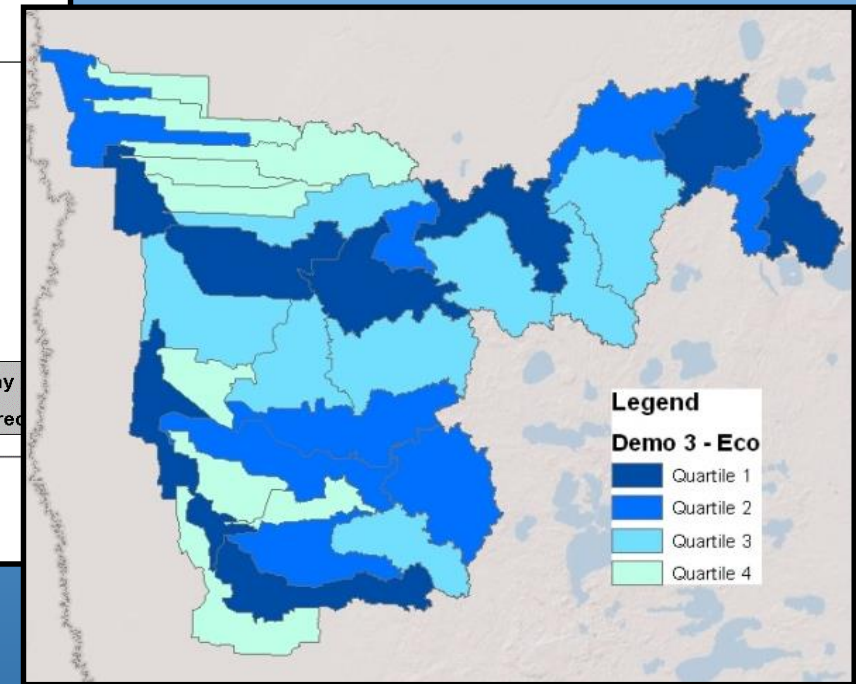
What Do the Results Look Like?

	A	B	C	D
1	HUC12ID	NAME	SUMFORMULA	SUMRANK
2	010802040205	Ware River-Barre F	35.31	1
3	011000050203	Hubbard Brook	3.84	2
4	010900020206	Sagamore groundw	3.74	3
5	010802040102	East Branch Swift F	3.74	4
6	010802070204	West Branch Farmi	3.63	5
7	010802060101	Westfield River-hea	3.56	6
8	010700040205	Nashua River-Cata	3.44	7
9	010900020203	Chequesset ground	3.43	8
10	010802060103	Dead Branch Westf	3.39	9
11	010802040202	East Branch Ware f	3.38	10
12	010802060202	West Branch Westf	3.37	11
13	010802060201	West Branch Westf	3.35	12
14	010900020301	Sippican River	3.25	13
15	011000050105	Housatonic River-V	3.23	14
16	010802020206	Millers River-Orcut	3.23	15
17	010802070201	Otis Reservoir	3.23	16
18	011000050204	Housatonic mainsto	3.21	17
19	010802020203	Tully River	3.21	18
20	010802040206	Muddy Brook	3.18	19

Rank Ordering



Bubble Plotting



Mapping



WSIO Summary

- Support Better Decisions

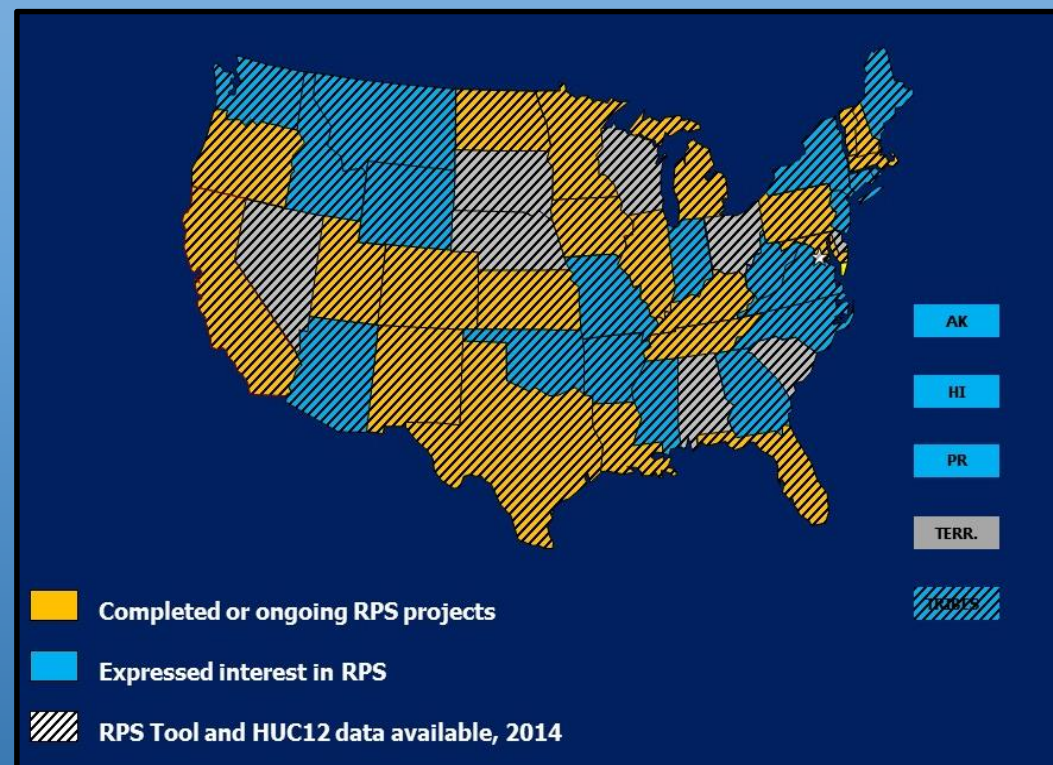
- Why is this watershed a priority?
 - Science-based Decision Management Tool
- Where can we be most effective ?
 - Repeatable, flexible approach that helps to enhance communication with partners and stakeholders.
- Where should we focus limited resources?
 - Target restoration or protection

- WSIO Tool Saves \$\$\$\$!

- \$40,000 – approximate savings in contractor costs to do state-wide analysis

- Increased Access to National Datasets

- Data for lower 48 states and software in the cloud
- Easily downloaded to analysis workbook
- Access to hundreds of unique datasets/indicators!



WSIO Disclaimer and User Requirements

Software requirements: The WSIO tool requires Microsoft Excel 2010 (or later) for data download and calculation. Excel 2013, the ESRI Maps for Office Add-in, and access to ArcGIS Online are required to use the tool's interactive mapping feature. Mention of product names does not denote endorsement by the EPA.

The WSIO is intended to be used as a decision-support tool by government, professional, academic, and community users with a basic understanding of how the ecological condition of a watershed and the stressors that act upon it can affect hydrology, biology, and water quality. WSIO data and tool outputs do not represent, change or substitute for any statute, regulation, policy, EPA decision or position.

It is the responsibility of the user to read and evaluate dataset limitations, restrictions, and intended use. To the best of our knowledge, the data, information, and supporting materials on the WSIO website are accurate; however, no warranty expressed or implied is made regarding the accuracy or utility of the data for general or scientific purposes, nor shall the distribution constitute any such warranty. All modeled geographic data are, by their nature, imperfect. The data provided by this tool shall not be taken as absolute truth, but rather as an approximation made in good faith based on the best available data.

For site-specific data, WSIO data will not replace “boots-on-the-ground” measurements or local knowledge. Better local data may be available from local sources.

Neither the EPA, EPA contractors, nor any other organizations cooperating with the EPA assume any responsibility for damages or other liabilities related to the accuracy, availability, use or misuse of the information provided on this website. The EPA reserves the right to change information at any time without public notice. Any errors or omissions should be reported to WSIO team using “Contact Us” on the WSIO website. We are always happy to hear your feedback and use that feedback for future enhancements.

April 2015